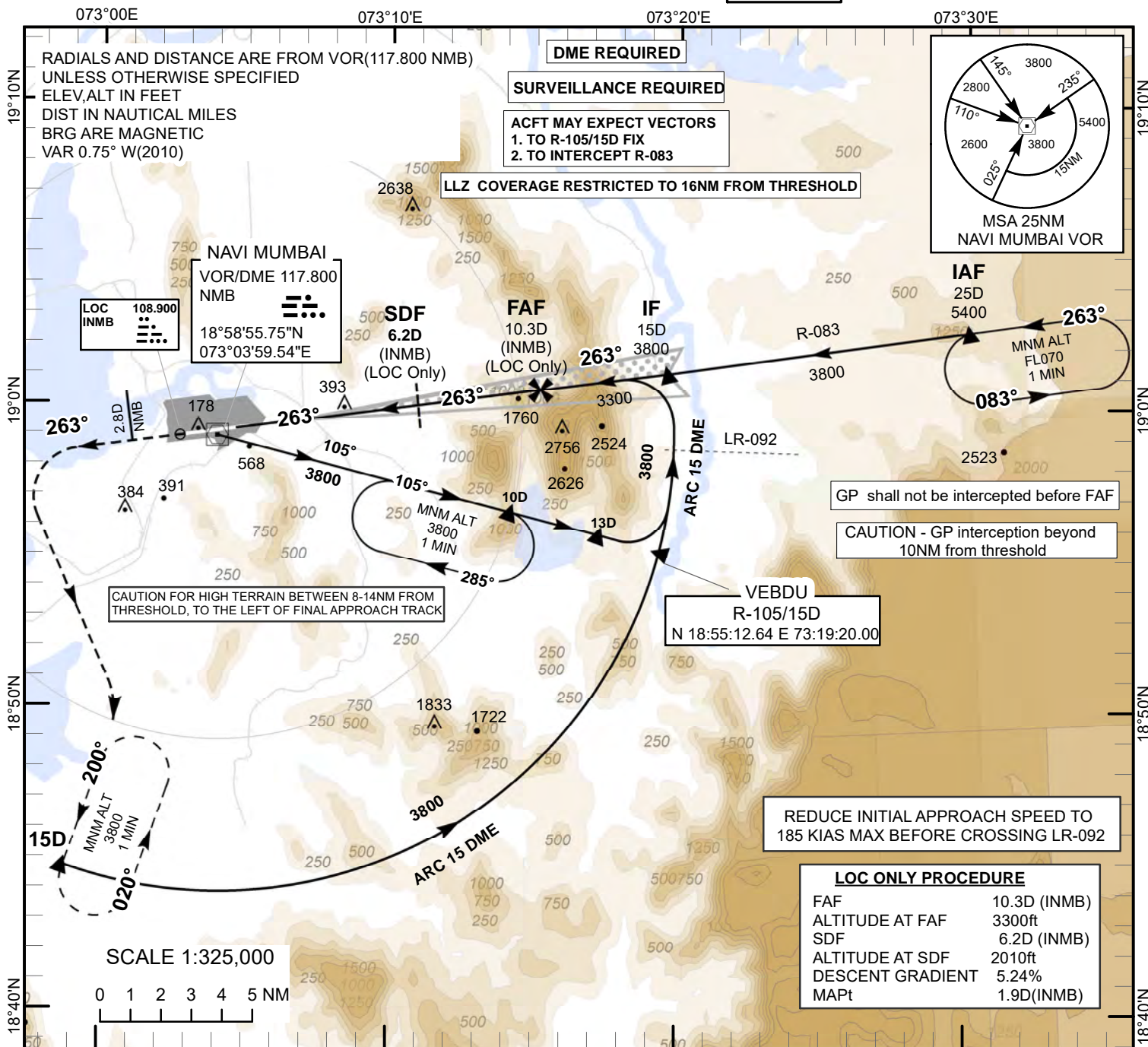


**INSTRUMENT  
APPROACH  
CHART**

**AERODROME ELEV 33 ft**  
HEIGHTS RELATED TO  
THR RWY 26 - ELEV 30 FT

TWR 119.000  
APP 118.275  
124.650  
125.450  
126.975

**NAVI MUMBAI INTL(VANM)**  
INDIA  
**ILS Y CAT II & III or  
LOC RWY 26**



**REDUCE INITIAL APPROACH SPEED TO 185 KIAS MAX BEFORE CROSSING LR-092**

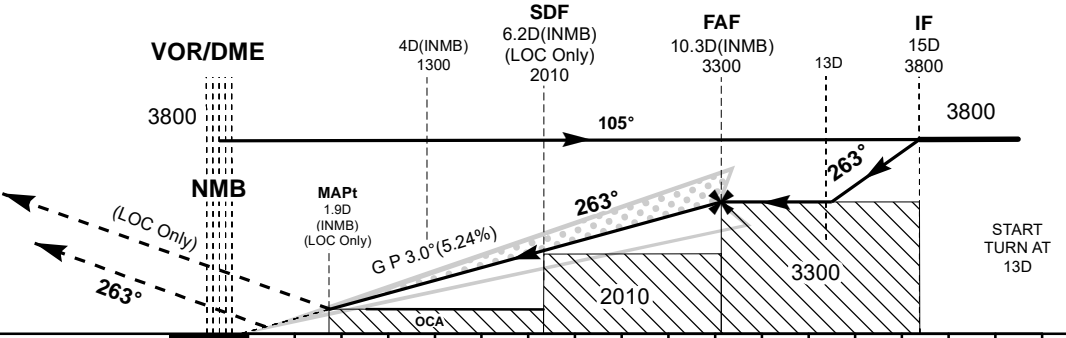
**LOC ONLY PROCEDURE**

FAF	10.3D (INMB)
ALTITUDE AT FAF	3300ft
SDF	6.2D (INMB)
ALTITUDE AT SDF	2010ft
DESCENT GRADIENT	5.24%
MAPt	1.9D (INMB)

**Transition Alt 6000**

**MISSED APPROACH**  
**Speed restricted to 185 KIAS MAX**  
Climb straight ahead at 2.8D(NMB) climbing turn LEFT to establish R-200(NMB) and join R-200/15D (NMB) fix hold at 3800ft or as instructed by ATC.

**ILS RDH 55**  
THR ELEV 30



NAUTICAL MILES FROM THR RWY 26

ILS-CAT II	OCA(H)				Distance / Altitude information for LOC Only Procedure												
	A	B	C	D	Distance (INMB-DME)	NM	10.3D(FAF)	10D	9D	8D	7D	6.2D(SDF)	6D	5D	4D	3D	2D
	130(100)	130(100)	130(100)	130(100)			3300	3210	2900	2580	2260	2010	1940	1620	1300	990	670
ILS-CAT I	230(200)				Ground Speed & Rate of Descent information for LOC Only Procedure												
LOC ONLY	WITH SDF		650(617)		Ground Speed		Kt	80	100	120	140	160	180				
	WITHOUT SDF		2010(1977)		Rate of Descent (5.24%)		FT/min	425	530	635	745	850	955				